



# CamEO

## Catchment Partnership Action Plan

*The vision of the CamEO partnership is to improve the quality and resilience of the water environment in the Cam and Ely Ouse catchment and, in doing so, protect and enhance the benefits it provides to communities and businesses.*

*We'll achieve this by fostering a shared understanding of the water environment that engages and empowers communities and stakeholders to deliver positive action in an integrated way.*

*Central to the partnership is the development and support of an inclusive approach that operates at both the catchment and sub-catchment scales.*

*By working collaboratively in this way we aim to align the interests and resources of public, private and third sector organisations to maximise the delivery of sustainable outcomes for the catchment.*

Version 1

# 2019-20

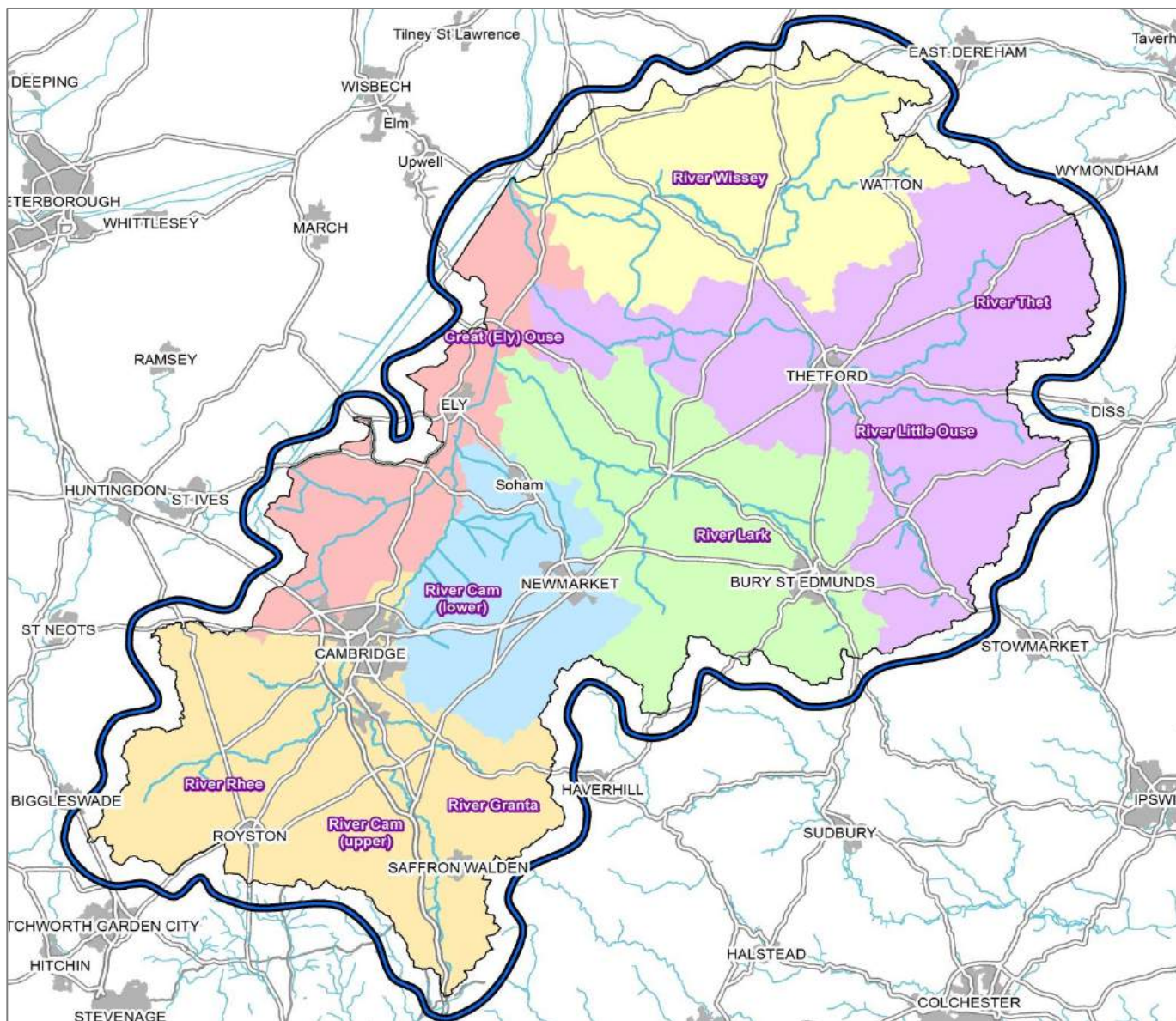
24-05-19



**Interreg**  
North Sea Region  
**WaterCoG**  
European Regional Development Fund



# Our Partnerships



*The CamEO partnership is co-hosted by The Rivers Trust and Anglian Water.*

*The hosting role includes a number of formal reporting and delivery responsibilities required to secure hosting funding received from the Environment Agency under Defra's Catchment Based approach. However, the primary role as hosts is a facilitative one - to enable the development of inclusive cross-sector partnerships operating at local scales, to deliver the vision of the partners.*

*CamEO is made up of local level, sub-catchment partnership groups, specific project groups (e.g. business-led water stewardship board) and a catchment-wide collaboration and engagement forum (steering group) that enables communication, knowledge and best practice exchange.*

*The partnership uses a variety of media to communicate and engage with a wider audience.*



# Data & Evidence

To support all partners with access to the latest datasets that have been made available from the CaBA support team, the CamEO hosts have created an online mapping portal for the CamEO partnership (ArcGIS storymap).

This is available to all partners and includes characteristics, issues and opportunities for the catchment. In 2019, we will be reviewing the information in these storymaps with partners, as well as incorporating partners' own information sources to strengthen the development and prioritisation of projects.

The data needs of the partnership will be reviewed at each collaboration and engagement forum and will support a monitoring strategy to strengthen project evidence bases and fill any data gaps that exist.

## CamEO Catchment Partnership

The Catchment Based Approach

Overview | Characteristics | Issues | Action | Submit a Project

### Welcome to the Catchment Mapping Portal

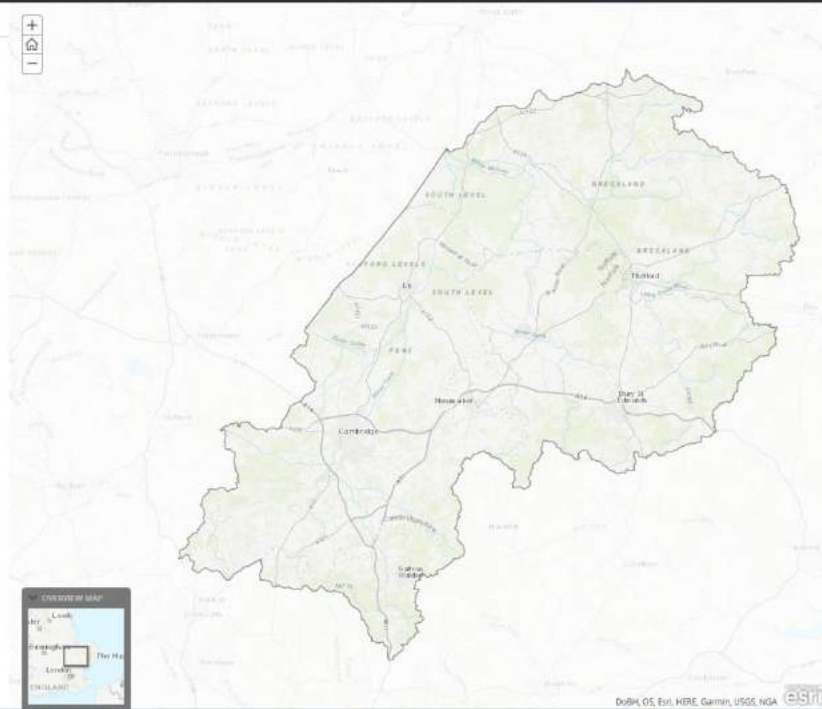
The **Cam and Ely (Cae) Partnership** is made up of individuals and representatives from organisations that have an interest in the health of the CamEO catchment – and the many benefits associated with having an environment rich in biodiversity and recreational opportunities. The partnership is headed by **Anglian Water** and **The Rivers Trust**.

The vision of the CamEO partnership is to improve the quality and resilience of the water environment in the Cam and Ely (Cae) catchment and, in doing so, protect and enhance the benefits it provides to communities and businesses. We'll achieve this by fostering a shared understanding of the water environment that engages and empowers communities and stakeholders to deliver positive action in an integrated way. Central to the partnership is the development and support of an inclusive approach that operates at both the catchment and sub-catchment scales. By working collaboratively in this way we aim to align the interests and resources of public, private and third sector organisations to maximise the delivery of sustainable outcomes for the catchment.

As a partnership, we have wide-ranging aims for delivering projects that benefit multiple users across the whole river catchment. The CamEO hosts provide support to sub-catchment partnerships that enable local groups to turn ambition into action. Working with sub-catchment partnerships and catchment-wide stakeholders, we have identified six inter-related objectives that represent the interests and activities of CamEO partners. Through a collaborative partnership approach we intend to add value to the core activities of organisations within the catchment:

- 1) **Community Action:** Encourage community-led management of river catchments by empowering decision making at a local level
- 2) **Farming and Land Use:** Farming and Land use sectors contribute to, and benefit from, healthy ecosystems.
- 3) **Health of the River System:** Maintain and restore healthy-functioning, biodiverse and resilient ecosystems and increase the understanding of natural capital
- 4) **Invasive Species:** Mitigate the impact of invasive non-native species (INNS)
- 5) **Securing Resources:** Improve strategic co-operation at the catchment scale in order to secure resources and facilitate more effective delivery
- 6) **Water Resilience:** Ensure there is enough water of sufficient quality to support the needs of the environment and wider society

You can download a copy of the CamEO Catchment Action Plan for the 2018/19 here.



**Catchment Issues**

#### Water Quality

Water quality can be affected by a number of issues including run-off from agriculture, septic tanks, sewage and industrial discharges and pollution incidents.

The Environment Agency water quality and ecology assessment sites can help show the spatial distribution of water pollution issues. Click on the links in the following text to bring up maps showing the latest available EA monitoring results from 22/10/2015.

Phosphate in surface waters can cause rapid algal growth, depleting the water of oxygen when it dies off (a process known as eutrophication). This map of 2015 WFD phosphate status highlights areas of the catchment which failed to meet WFD phosphate targets in 2010. Ammonia comes from human sewage and animal manures, and can be toxic to fish and other aquatic life at high concentrations. Dissolved Oxygen in the water is essential for many aquatic lifeforms, but levels can be reduced as water warms up, when untreated sewage is discharged, or when eutrophication occurs (see phosphate above). Phytoplankton (microscopic plants and algae) and Macrophytes (larger aquatic plants) form a primary part of the food chain, but they are affected by nutrient enrichment, and are a good indicator of diffuse pollution problems. Aquatic Invertebrates (insects, shrimps and crayfish), are a crucial part of the aquatic ecosystem, providing food for fish, birds and other higher lifeforms. They are impacted by pollution, and because they mostly stay in the same location, they can provide a good indicator of long-term water quality.


Together these results help highlight areas of the catchment where there may be water quality issues.

Pollution can not only be problematic for wildlife and recreational purposes, but can also have severe impacts on drinking water supplies. Drinking Water Safeguard Zones are areas where land should be managed sensitively in order to reduce the impact of drinking water abstraction when surface water or ground water - the map only shows surface water safeguard zones. Click here for more information about Drinking Water Safeguard Zones.

#### Phosphate

The Source Apportionment OIS (SAOIS) model predicts how much phosphate is being generated in each waterbody catchment and an indication of how much is coming from sewage treatment works, septic tanks or diffuse agricultural sources (click a point to see percentage contributions).

The model outputs also reveal what percentage improvement is needed in each waterbody catchment to meet WFD water quality standards for phosphorus. This information can be used to infer where catchment management of P is likely to be achievable.



# Our Objectives

*Together with our sub-catchment partnerships and catchment-wide stakeholders, we have identified six inter-related objectives that represent the interests and activities of the CamEO partnership.*

*Through a collaborative partnership approach, we intend to add value to the activities and projects already planned by member organisations within the catchment, increasing awareness of our priorities and identifying areas of overlap.*

*These six priorities represent long-term objectives for the partnership - each year, actions will be developed as part of a delivery plan, setting out partners' commitments for CamEO over the next 12-24 months.*

*Not every objective requires action in that timescale and our plan may change to allow us to react to opportunities.*

## Community Action

### **Primary Objective:**

***Encourage community-led management of river catchments by empowering local decision making .***

### **Specific Objectives:**

- 1.1 Increase community and stakeholder understanding of the pressures on the water environment and the way in which it is managed.*
- 1.2 Increase community and stakeholder awareness and engagement with CamEO and sub-catchment partnerships.*
- 1.3 Provide opportunities for appropriate community-led delivery within the catchment and support the alignment of relevant initiatives and interest groups.*
- 1.4 Communicate the activity and benefits of community-led actions within the catchment.*

### **Primary Objective:**

***Farming and Land use sectors contribute to, and benefit from, healthy ecosystems.***

### **Specific Objectives:**

- 2.1 Reduce the impact of Diffuse Water pollution from Agriculture in vulnerable & protected areas of the catchment.*
- 2.2 Encourage and support sensitive management of watercourses and riparian habitat.*
- 2.3 Promote and encourage best practice for delivering natural flood management solutions.*
- 2.4 Promote and support the role that businesses can play to support sustainable supply chains.*

## Farming & Land Use

# Healthy Rivers & Groundwaters

## *Primary Objective:*

*Maintain and restore healthy-functioning, biodiverse and resilient ecosystems and increase 'natural capital' understanding.*

## *Specific Objectives:*

*3.1 Promote and encourage best practice techniques for river restoration and support the delivery of projects aimed at improving the habitat, morphology and connectivity of watercourses.*

*3.2 Reduce negative impacts on water quality from rural and urban sources.*

*3.3 Promote and encourage the implementation of best practice sustainable drainage schemes.*

*3.4 Enhance the biodiversity of river ecosystems.*

## *Primary Objective:*

*Improve strategic co-operation at the catchment scale in order to maximise resources and facilitate more effective delivery.*

## *Specific Objectives*

*5.1 Increase alignment and availability of existing resources to support the objectives of the partnership.*

*5.2 Facilitate increased coordination of project planning and action across the catchment*

*5.3 Improve skills base and capacity across the partnership by facilitating training opportunities amongst partners.*

## Maximising Resources

# Invasive Non-Native Species

## *Primary Objective:*

*Mitigate the impact of invasive non-native species (INNS).*

## *Specific Objectives*

*4.1 Promote and encourage the adoption of best practice INNS biosecurity measures.*

*4.2 Promote and encourage the adoption of best practice for the mitigation/potential eradication of INNS within the catchment.*

## *Primary Objective:*

*Ensure there is enough water of sufficient quality to support the needs of the environment and wider society.*

## *Specific Objectives*

*6.1 Encourage and promote the adoption of best practice for water resource management throughout society. Including water efficiency, capture and storage.*

*6.2 Provide mechanisms for CamEO partners to engage with and influence water resource management.*

## Water Resources



# Partnership Action

# CAMEO ACTION LEAD NEXT STEPS

## COMMUNITY ACTION

1.2.1	Promote the CamEO partnership, its partners and sub-groups	CamEO hosts & partners	Attend a minimum of two outreach events (The River Festival & CaBA Conference) in the summer 2019
1.2.2	Promote the CamEO partnership, its partners and sub-groups	CamEO hosts	Develop promotional material to promote the partnership themes, projects and collaboration at event, as required for engagement events throughout the year
1.3.1	Encourage collaboration between community-led projects, such as simple river restoration and litter picks	CamEO hosts	Outline the community-led aspirations and volunteer networks across the catchment within the “restoring our river catchments” project summary
1.3.2	Encourage collaboration within community-led projects planned in each of the sub-catchments	CamEO hosts and EA	In September 2019, host a workshop to encourage collaboration and develop a delivery plan for the Brecks Fen Edge and Rivers Landscape Partnership bid
1.4.1	Provide open access to catchment data and evidence to support community led project planning and delivery	CamEO hosts	Review, update, publish and promote ArcGIS storymaps for CamEO by March 2020

## FARMING AND LAND USE

2.1.1	Increase collaboration and integration between farm advisors in the catchment	CamEO partners	Outline the aspirations of CamEO partners to provide advice to and/or fund interventions for landowners within the “farming for the future of water” project summary
2.1.2	Increase collaboration and integration between farm advisors in the catchment	Wissey partners	Begin to expand the approach of the Wissey advisor group into the other sub-catchment partnerships from September 2019
2.3.1	Understand the impacts of land-use and growth on catchment drainage and influence sustainable drainage solutions	CamEO hosts	Facilitate the co-development of a drainage strategy with the rural catchment by 2020
2.3.2	Promote healthy soils and sustainable soil management	CamEO business board	Develop and publish an online storymap for the different soil types in the catchment by March 2020
2.4.1	Increase engagement with businesses within the CamEO partnership	CamEO hosts	Align the current CamEO water sensitive business board with the ambitions of Courtauld 2020, by October 2019

#	CAMEO ACTION	LEAD	NEXT STEPS
---	--------------	------	------------

### HEALTHY RIVERS & GROUNDWATERS

3.1.1	Provide access to innovative planning and best practice river restoration techniques for CamEO partners	CamEO hosts	Represent CamEO at River Restoration Centre (RRC) “catchment-wide river restoration” training and review outcomes with partners in June 2019
3.2.1	Identify how smarter monitoring strategies may help improve collective understanding of ecosystem health and catchment challenges	CamEO hosts	Develop a monitoring strategy for CamEO and its sub-catchments, including current data availability and citizen science projects by March 2020
3.2.2	Identify how smarter monitoring strategies may help improve collective understanding of ecosystem health and catchment challenges	CamEO hosts	Financially support the delivery of two RiverFly training workshops in April and October 2019
3.2.3	Improve the ability of CamEO partners to respond to water quality project opportunities within local business plans	Anglian Water	Summarise and discuss water quality investment planned within Anglian Water’s National Environment Programme into the “tackling poor water quality” project overview
3.3.1	Understand the impacts of land-use and growth on catchment drainage and influence sustainable drainage solutions	CamEO hosts	Facilitate the co-development of a drainage strategy with the urban catchment by 2020

### INVASIVE NON-NATIVE SPECIES

4.1.1	Improve awareness of check, clean, dry within the wider catchment communities	CamEO hosts	Discuss suitable locations for new check, clean, dry signage at partnership meetings throughout the year
4.2.1	Improve the position of CamEO partners to be able to attract funding to deliver INNS projects	CamEO hosts	To support the “facing the threat of invasive species” project , procure data and produce an INNS strategy for CamEO, linking the priorities of the eastern RIMP by September 2019
4.2.2	Improve the position of CamEO partners to be able to attract funding to deliver INNS projects	CamEO hosts	Outline potential INNS funding opportunities in the CamEO INNS strategy and prioritise action ahead of 2020 for Anglian Water’s anticipated grant scheme
4.2.3	Support collaboration between CamEO partners interested in tackling INNS	Little Ouse & Thet partners	Support a balsam bash along the River Little Ouse in the summer 2019
4.2.4	Support collaboration between CamEO partners interested in tackling INNS	CamEO hosts	Outline the INNS aspirations of partners across the catchment within the “facing the threat of invasive species” project summary

### MAXIMISING RESOURCES

5.1.1	Develop and initiate a strategy for aligning existing resources & securing additional resources for partnership activities	CamEO hosts	At the partnership meeting in June 2019, discuss how to ensure that collaboration is central to project delivery in planned funding bids
5.1.2	Develop and initiate a strategy for aligning existing resources & securing additional resources for partnership activities	CamEO hosts	Outline current partnership resources and easily accessible funding streams as part of the “resourcing a successful partnership” project overview
5.2.1	Promote a partnership approach and wider engagement within anticipated funding bids	CamEO hosts	Throughout 2019, sit as a board member for the Brecks Fen Edge and River and New Life Old West landscape partnership bids, promoting the role of CamEO and integrated delivery
5.2.2	Promote a partnership approach and wider engagement within anticipated funding bids	CamEO hosts	By March 2019, develop a project within Brecks Fen Edge and Rivers landscape partnership bid to delivery partnership development workshops to increase collaboration and sustainability
5.2.3	Promote a partnership approach and wider engagement within anticipated funding bids	CamEO hosts	Engage lead partners within the Brecks Fen Edge and Rivers landscape partnership bid to identify opportunities for collaboration from September 2019

### WATER RESOURCES

6.1.1	Improve awareness of water sustainability messaging already being used by local businesses in CamEO	Water cos.	For the summer of 2019, collate water sustainability messaging and make this available for partners if possible
6.1.2	Encourage longer-term water resource planning within water users in the CamEO catchment	CamEO hosts	Outline the main water users in the catchment within the “sustainable supply for all water users” project scope and discuss how the partnership can engage with these
6.2.1	Align the activities of the partnership with national water resource initiatives	CamEO hosts	Support the development of an Interreg funding with Water Resources East, with an anticipated submission in mid to late 2019
6.2.2	Align the activities of the partnership with national water resource initiatives	CamEO hosts	Continue to engage with the DEFRA abstraction pilot in 2019, keeping partners updated on progress at collaboration and engagement forums

